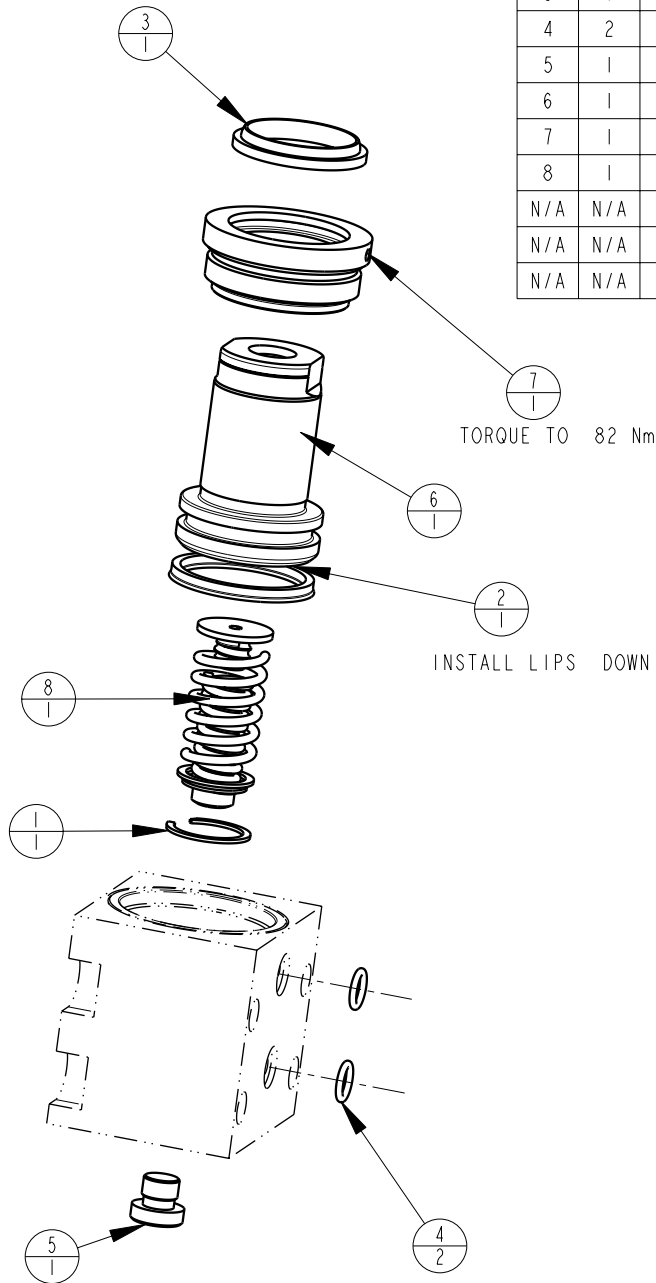


MODEL NO.			MODEL NAME
4211005			ASSY,CYL, BB, MM, 39,9KN, 12,5 STRK,SA
NO.	QTY	PART NO.	DESCRIPTION
1	1	23050013	SNAP RING, INTERNAL
2	1	39011028	SEAL, BEVEL, 1-5/16 X 3/32 X 1-1/2
3	1	39050020	WIPER,SNAP-IN, (1-1/8)
4	2	39050042	O-RING, (-011)
5	1	43068004	PLUG, 1/8 BSPP
6	1	48011500	METRIC PISTON, CYL., 12,5 STRK., 39,9 kN
7	1	82031501	GLAND, CYL, 8800 & 39.9 KN
8	1	92060003	SPRING, PAK
N/A	N/A	60210302	KIT, SEAL, BB, 39,9 KN, SA
N/A	N/A	6V210112	KIT, SEAL, BB, 8800/39,9 KN, SA, FKM
N/A	N/A	61210314	KIT, SPRING, BB, 39,9 KN



3. SPRING PAK AND RETAINING RING ARE INCLUDED IN THE SPRING KIT.
2. ALL SEALS, O-RINGS, AND WIPERS ARE INCLUDED IN THE STANDARD OR FKM SEAL KIT.
1. APPLY LUBRICANT TO ALL SEALS PRIOR TO ASSEMBLY (DO NOT USE SILICONE TYPE LUBRICANTS).

NOTE:

PARTS LIST



VEKTEK, INC.
1334 E. SIXTH AVE. P.O. BOX 625
EMPORIA, KS. 66801 U.S.A.

ASSEMBLIES AFFECTED
42-1110-05

PARTS LIST, BB, MM, 39,9 KN, SA

SIZE
A MPLV2155

REV
B

B	2625	RELEASE	GAR	2/28/14
REV	IN ACCORDANCE WITH ECN	EFFECTIVE DATE	REVISED BY	DATE
DRW BY:	G. ROMINE	DRAWING STATUS: Released		
DATE:	11/19/07	PRODUCTION APPROVED FOR RELEASED STATUS ONLY		

FORM FEG035_PL_ASIZE, REV. B

SHEET 1 OF 1